

Taking safety, quality and cost-efficiency to new heights

Large steam sterilisers for hospitals and CSSD units



# Quality from Miele Professional

Never be satisfied with less!



For more than 50 years, Miele Professional has stood for mature innovations in the field of medical technology. Our high-performance large steam sterilisers reliably and successfully complete the instrument reprocessing cycle in hospitals and CSSD units – and excel by offering Miele’s proverbial standards of quality.

## **Quality**

Your patients trust your professional expertise – so why not place your trust in Miele’s proverbial quality! The combination of choice materials, perfect workmanship and mature and sophisticated technology has earned Miele its exceptional reputation in the field of medical technology. And Miele’s after-sales service is renowned for its award-winning excellence.

## **Performance**

Machines from Miele Professional excel in terms of their superior performance. A wide selection of accessories and processes reflecting everyday, practical needs leads to perfect results and high throughput, even in highly specialised applications. This ensures that expensive instruments are ready for use again in next to no time.

## **Efficiency**

Profit daily from excellent efficiency: Machines from Miele Professional are thorough and fast, affording top-rate protection to materials in the process. Thanks to their high quality, they also require little maintenance and are highly durable, safeguarding your investments in many respects. The sparing use of water and chemicals further contributes towards keeping operating costs in check.



Miele Professional is a decision in favour of top performance and quality. High-quality machines which rise to meet expectations each and every day are the key to the trust commercial users place in our company: 97% of all customers\* claim they would buy from Miele Professional again next time round.

#### **Dependability**

As a company now run by its fourth-generation proprietors, Miele remains true to its responsibility to its products and processes, its employees and business partners and to natural resources.

- Product development consistently in tune with the goals of quality, durability and sustainability.
- Ground-breaking innovations 'Made in Germany'
- Award-winning ergonomics, functionality and product design
- Entire systems from a single supplier
- Lower operating costs over entire product life cycle (Total Cost of Ownership)
- Highly commended after-sales service offering blanket geographical coverage and a fast response

**50**  
**YEARS** Medical Technology



# System4Med from Miele Professional:

Single-source supplier

## Planning:

From the initial concept to on-site installation, Miele Professional is always at your side with a mass of experience covering decades. Our planning team will draw up designs to meet varying site requirements and capacity needs.

## Compact and fully furnished

Single-source supplier: Alongside systems for washing, disinfecting and sterilisation, Miele also provides further accessories for the reprocessing of sterile supplies in CSSD units (e.g. pre-cleaning systems, logistics and storage, sluices).

## Service

Medical Product Engineers from Miele Professional are at hand to provide support with installation, validation, maintenance and repair. For safe reprocessing and maximum system uptime.

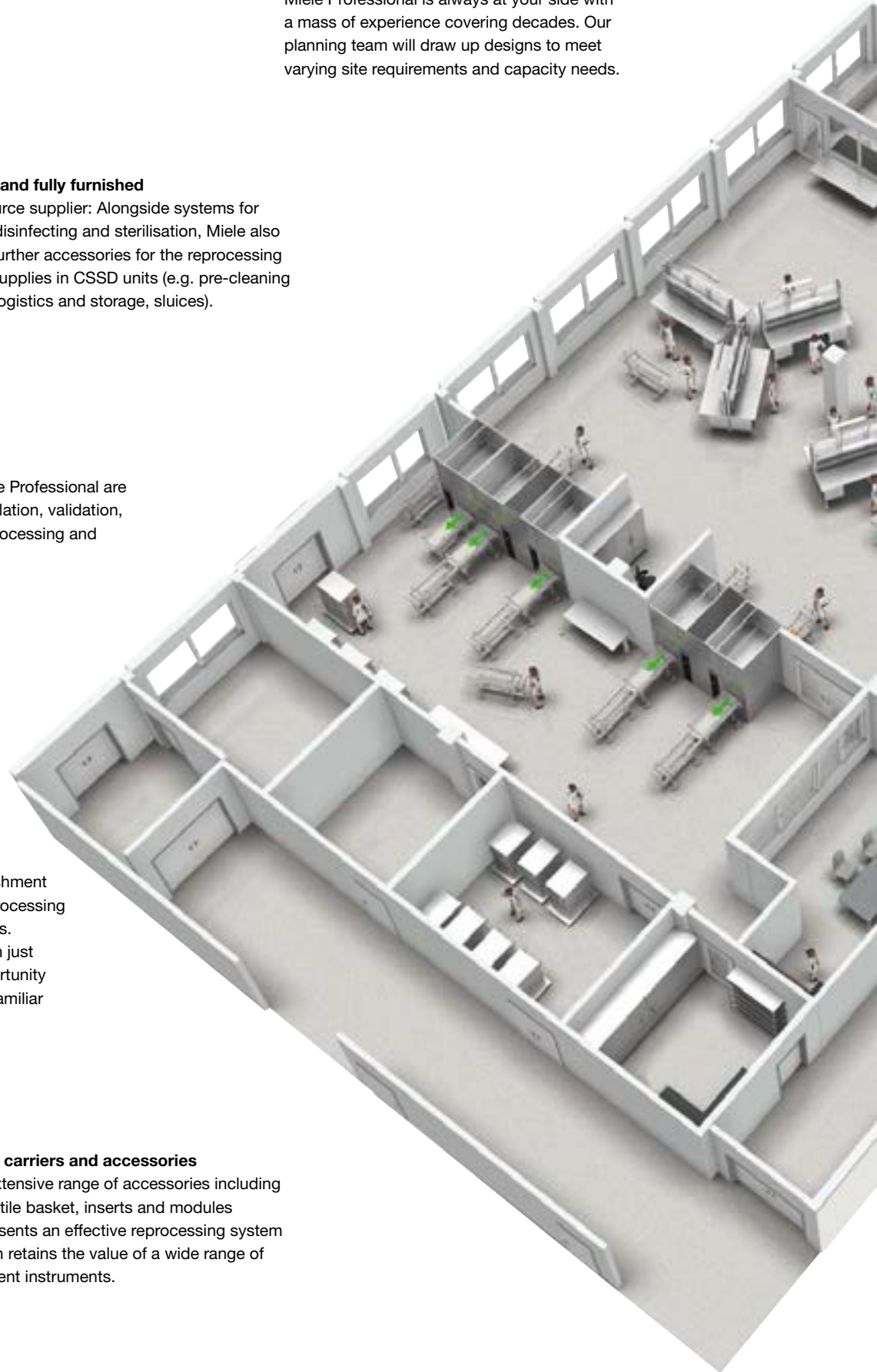
## Mobile CSSD

Even during construction and refurbishment work, Miele Professional's CSSD reprocessing solutions can still be available to users.

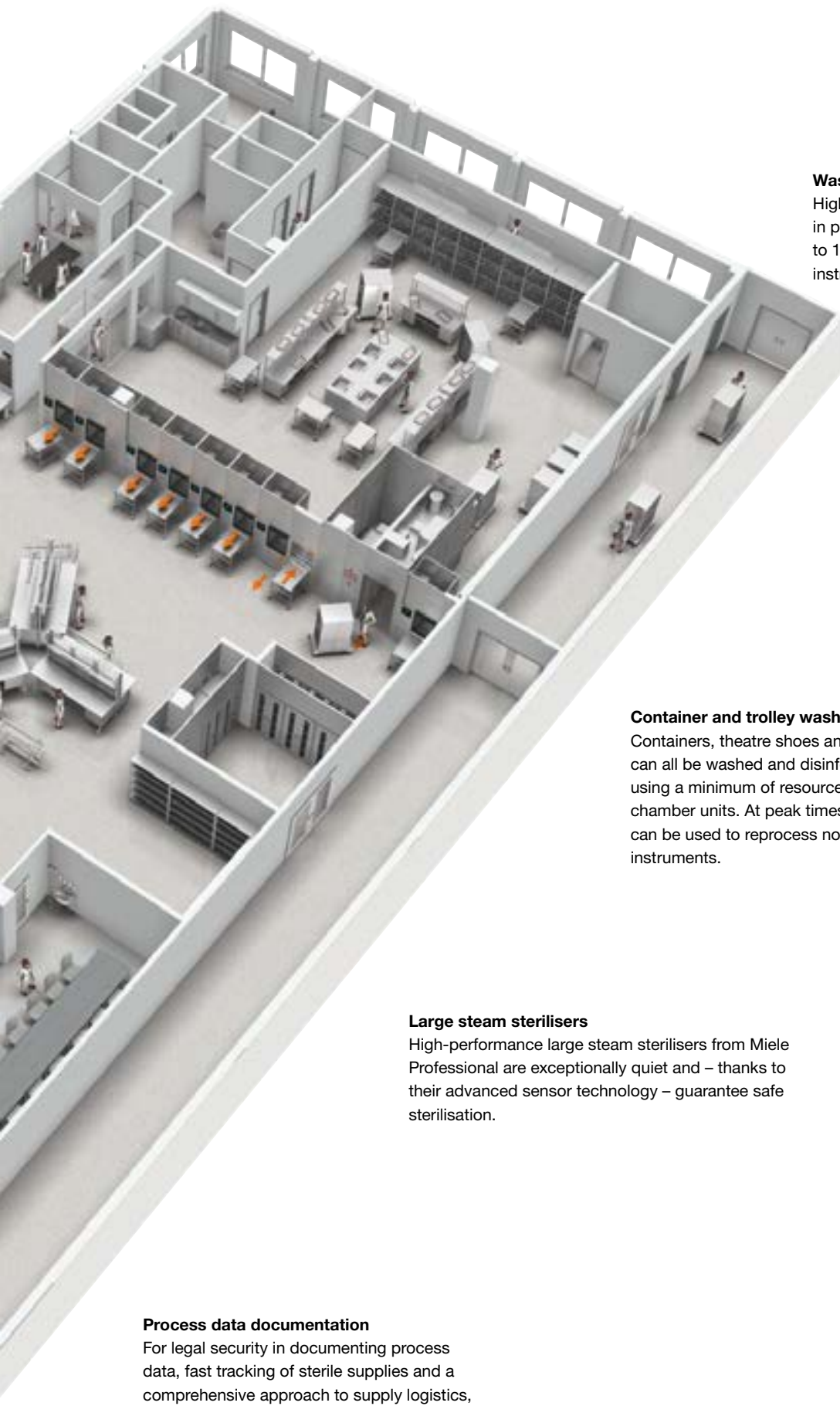
A mobile CSSD unit can be erected in just a matter of hours and offers the opportunity to reprocess instruments safely in a familiar 3-room environment.

## Load carriers and accessories

An extensive range of accessories including versatile basket, inserts and modules represents an effective reprocessing system which retains the value of a wide range of different instruments.







### **Washer-disinfectors**

High-performance washing and disinfection in proven Miele quality with a capacity of up to 18 DIN mesh trays per cycle for high-level instrument throughput.

### **Container and trolley washers**

Containers, theatre shoes and transport trolleys can all be washed and disinfected safely, fast and using a minimum of resources in Miele's large-chamber units. At peak times, the same machines can be used to reprocess non-lumened surgical instruments.

### **Large steam sterilisers**

High-performance large steam sterilisers from Miele Professional are exceptionally quiet and – thanks to their advanced sensor technology – guarantee safe sterilisation.

### **Process data documentation**

For legal security in documenting process data, fast tracking of sterile supplies and a comprehensive approach to supply logistics, Miele will always offer a solution to match your needs. Safe and intuitive.

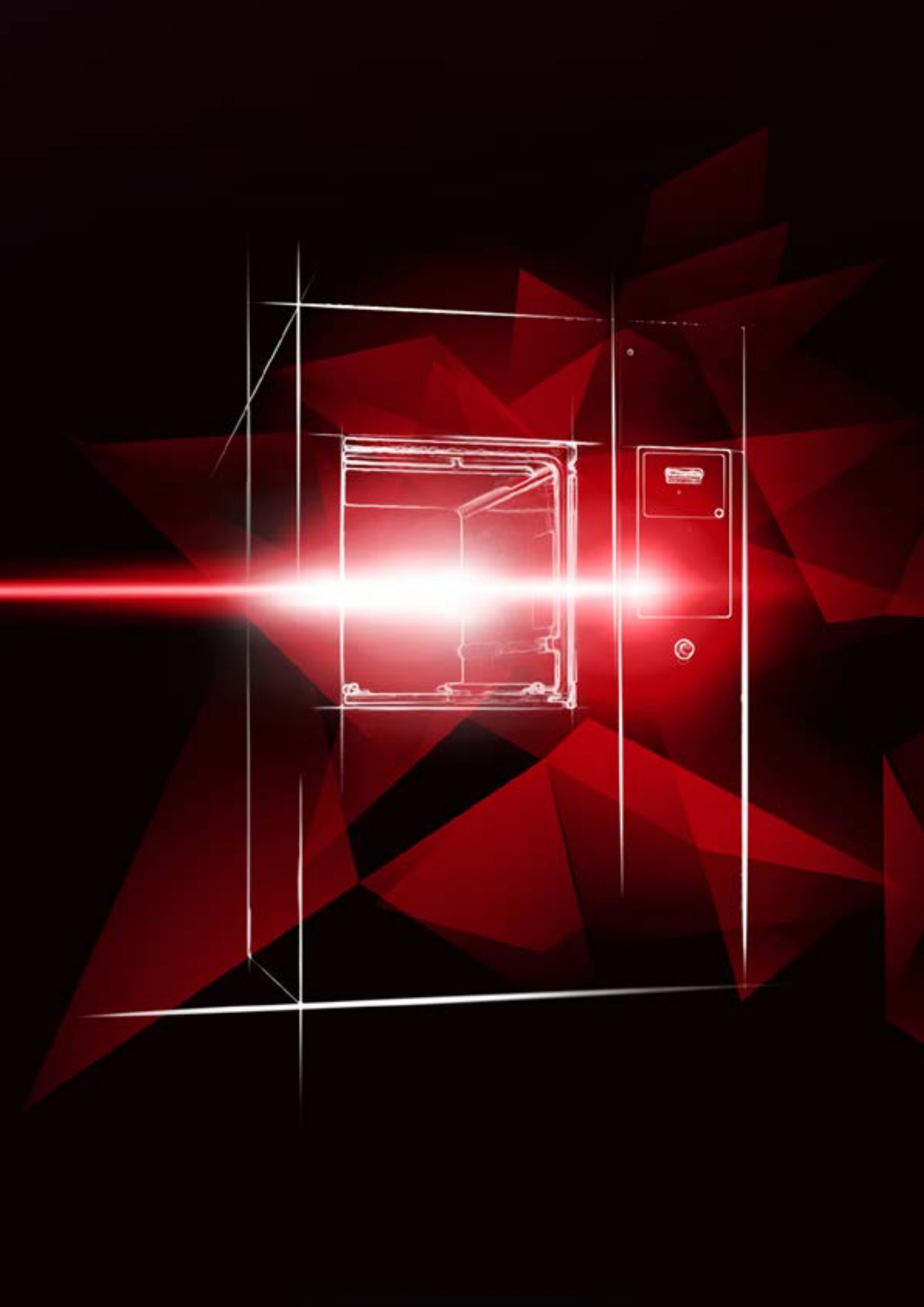




## Large steam sterilisers from Miele Professional

The ultimate in reliability, safety and efficiency

Safe sterilisation places great demands not only on process technology but also on mechanical componentry and operational safety. Miele Professional rises to this challenge with meticulously designed sterilisers, high-quality workmanship and products which offer users effective and affordable reprocessing.





# Product highlight: Miele 4D sensor

The new dimension in instrument reprocessing

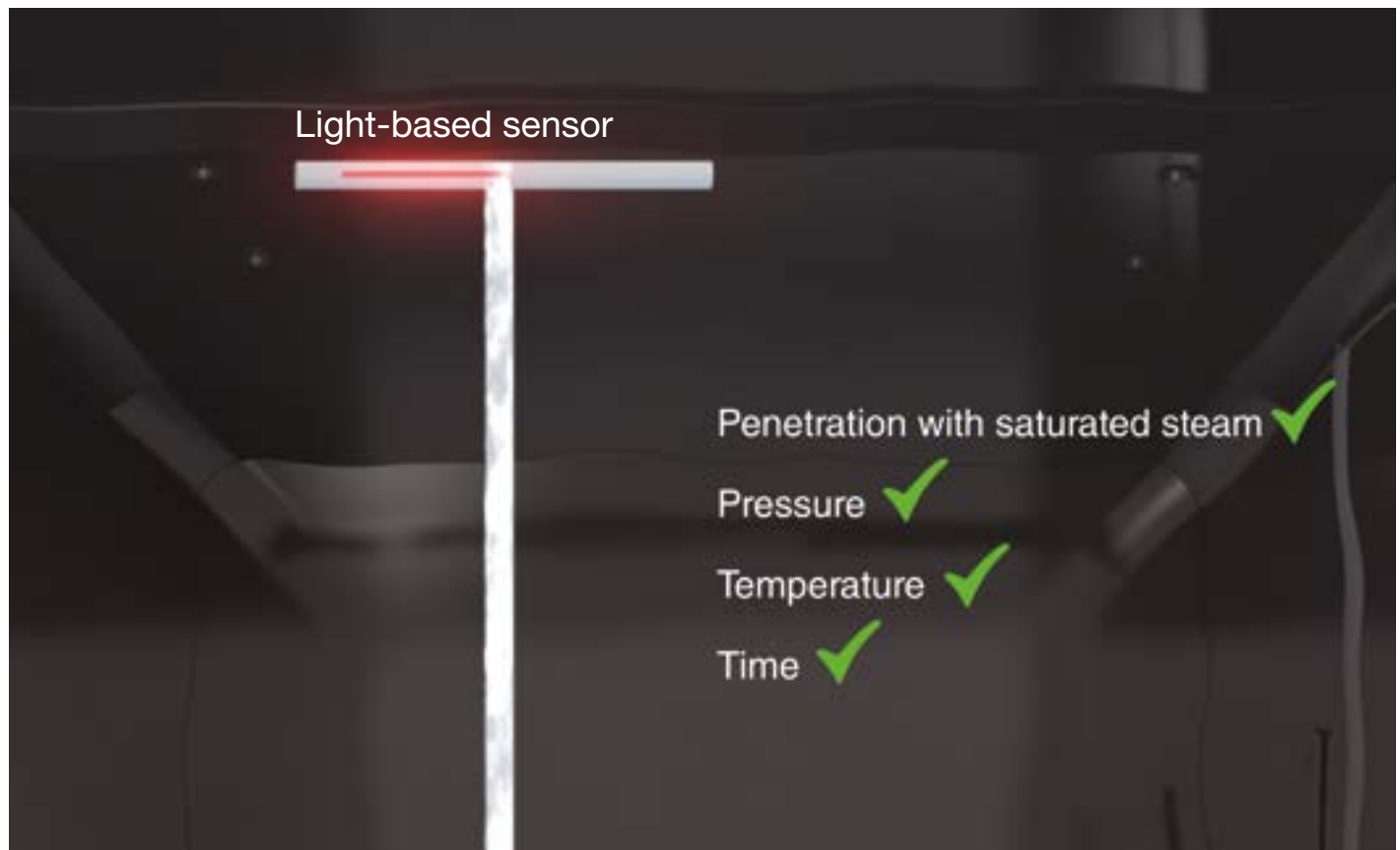
## 4D sensor

Reliable sterilisation requires the successful interaction of multiple factors. Alongside achieving set values for temperature, pressure and holding time, this also includes the penetration of the load to be sterilised with saturated steam. Now, for the first time ever, Miele's 4D sensor furnishes proof during the cycle of sterilisation being completed using saturated steam.

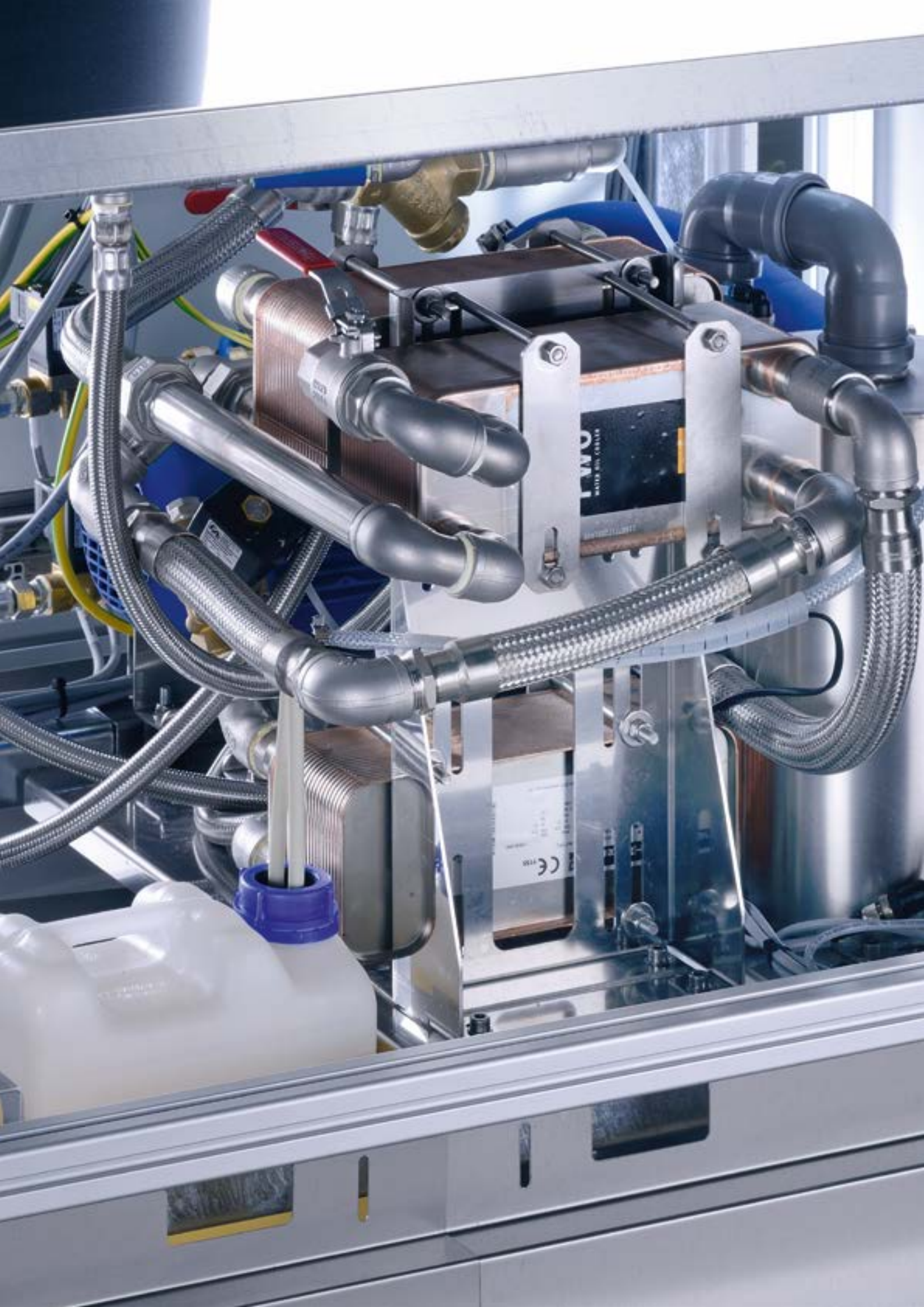
The new Miele 4D sensor is a unit based on the use of light. Only saturated steam is able to pass through a special photo-electric barrier and thereby indicate that the process was completed in the presence of saturated steam in the interests of safe sterilisation.

As a result, Miele's 4D sensor gives users the peace of mind of knowing that each cycle guarantees safe sterilisation.

Exclusive  
to Miele



Only when the parameters of steam penetration, pressure, temperature and holding time have been met in full can safe sterilisation be deemed to have taken place.



# Product highlight: Vacuum pump cooling

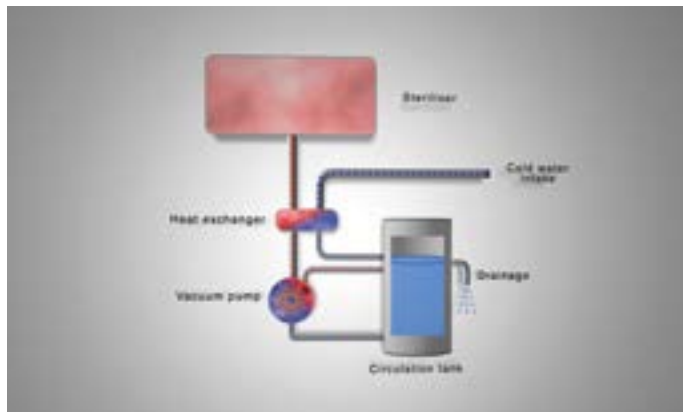
## Improved efficiency and protection of componentry

Large steam sterilisers from Miele Professional rely not least on an exceptionally powerful vacuum pump for their speed and reliability. Cooling the pump generally requires tap water with a temperature of at most 15°C. The optional ECO 1 and ECO 2 bundles now considerably extend the range of applications whilst at the same time achieving maximum efficiency gains.

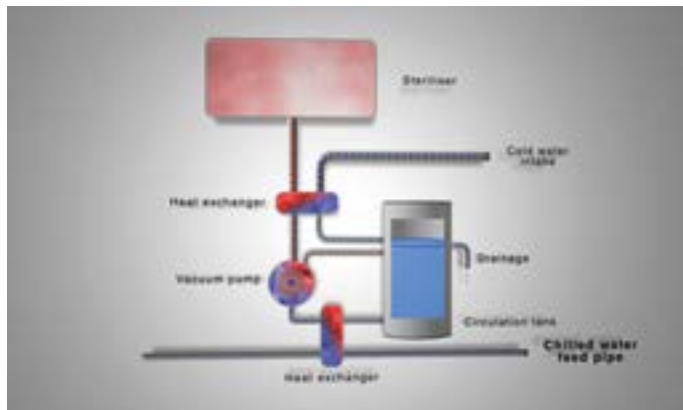
The new optional ECO bundles allow the pump to be cooled using actively chilled water from the hospital's own supply. This way, the use of tap water is significantly reduced whilst simultaneously increasing pump efficiency.

### The benefits of optional ECO features at a glance:

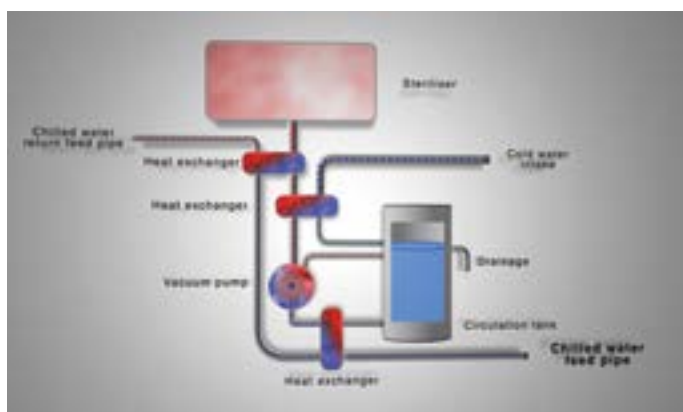
- Increased vacuum pump efficiency
- Reduction in cycle times
- Lower water consumption
- Running cost savings



Standard configuration with tap water used to cool vacuum pump



ECO 1:  
Vacuum pump cooled using chilled water = Water savings of up to 20%



ECO 2:  
Vacuum pump cooled using chilled water = Water savings of up to 90%



# Product benefit overview

## PS 56, PS 59 large steam sterilisers



### Sensors as specified by EN 285

- Option: Air detector to identify unexpected leakages (in accordance with EN 285)
- Option: NCG sensor to check steam for presence of non-condensable gases (in accordance with EN 285)



### Comprehensive safety features

- Well-conceived safety concept for fast throughput and the highest levels of user protection
- Photoelectric safety curtain to monitor entire access area to steriliser chamber
- Contact-free interruption of door closure before physical contact is made with chamber walls or load
- Effective avoidance of errors and injuries



### Fully heated pressure chamber

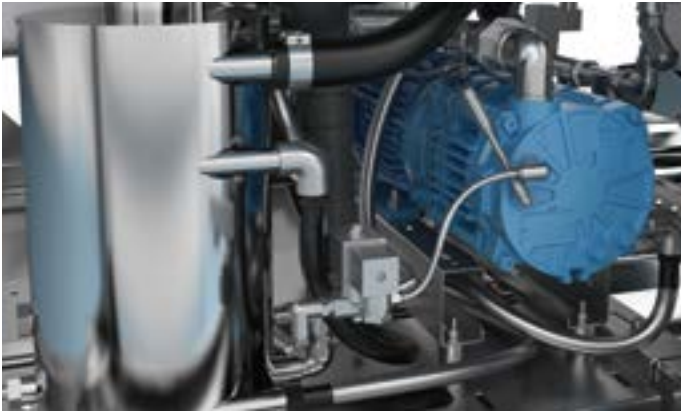
- Pressure chamber with fully steam-heated jacket design
- Particularly fast and uniform temperature distribution
- Short cycles and efficient drying of sterilised loads
- Reduced risk of rouging thanks to electro-polished chamber walls.
- Highest durability and cost-efficiency



### Reliable controls

- Separate systems for process controls and process documentation
- High-level reliability through redundancy in controls
- Robust industrial-grade PC and PLC controls with uninterruptible power supply
- Fast service access and easily accessible components for maintenance





#### State-of-the-art vacuum pump

- Powerful vacuum pump for reliable and cost-effective sterilisation
- Particularly deep vacuum drawn for full steam penetration
- Very quiet in operation, sound emissions < 58 dB
- Up to 90% water savings with optional ECO system



#### Automatic descaling of vacuum pump

- An automatic descaling function for the pump circuit is optionally available to cover cases where the requisite quality of cooling water cannot be provided on site.
- Benefit: This increases the longevity of the vacuum pump and significantly reduces the need for maintenance.

**Exclusive  
to Miele**



#### Economical steam generation

- Various steam generation options are available to ensure cost-effectiveness
- Connection to an on-site steam supply or separate electrically heated steam generator
- Internal steam-to-steam converter to create high-purity steam using heat transfer from industrial-grade steam
- Highest system stability and uptime through combination of both supply types



#### Perfectly matching loading and unloading systems

- Newly developed systems for loading and unloading large steam sterilisers
- Logistics optimally tailored to requirements of installation site
- Carriage-free transportation of sterile supply containers or baskets for sterile supplies in non-woven wrapping (PS 56 series)
- Perfect utilisation of chamber volume, no need for return hatches or provision of spare load carriages
- Smooth-running loading trolleys with optional height-adjustment feature (PS 56 series)

# Model overview

## PS 56 large steam sterilisers



Large steam sterilisers	PS 5666v
Chamber size* H/W/D [cm]	60 x 60 x 60
Useable volume [l]	310
Capacity (STUs/baskets)	4/4

Large steam sterilisers	PS 5669v
Chamber size* H/W/D [cm]	60 x 60 x 90
Useable volume [l]	436
Capacity (STUs/baskets)	6/8

Large steam sterilisers	PS 5662v
Chamber size* H/W/D [cm]	60 x 60 x 120
Useable volume [l]	564
Capacity (STUs/baskets)	8/12

All models 2-door (barrier) machines, v = vertically opening sliding door

STU = Sterile supply unit 600 x 300 x 300 mm; Basket = Sterile supply basket ISO 600 x 400 x 130 (150) mm

\* Chamber dimensions H/W/D in cm

All model types listed will be available from May 2017 onwards.

# Model overview

## PS 59 large steam sterilisers



<b>Large steam sterilisers</b>	<b>PS 5966h</b>
Chamber size* H/W/D [cm]	90 x 60 x 60
Useable volume [l]	496
Capacity (STUs/baskets)	6/6
<b>Large steam sterilisers</b>	<b>PS 5969h</b>
Chamber size* H/W/D [cm]	90 x 60 x 90
Useable volume [l]	701
Capacity (STUs/baskets)	9/12
<b>Large steam sterilisers</b>	<b>PS 5962h</b>
Chamber size* H/W/D [cm]	90 x 60 x 120
Useable volume [l]	906
Capacity (STUs/baskets)	12/18
<b>Large steam sterilisers</b>	<b>PS 5968h</b>
Chamber size* H/W/D [cm]	90 x 60 x 180
Useable volume [l]	1420
Capacity (STUs/baskets)	18/24

All models 2-door (barrier) machines, h = horizontally opening sliding door

STU = Sterile supply unit 600 x 300 x 300 mm; Basket = Sterile supply basket ISO 600 x 400 x 130 (150) mm

\* Chamber dimensions H/W/D in cm

**All model types listed will be available from August 2017 onwards.**

[Miele Professional on the web](#)

For detailed information on technical specifications, features and accessories:  
[www.miele-professional.com](http://www.miele-professional.com)

# Accessories

## Transportation systems for stackable loads

### Manual loading/unloading (PS 5666, PS 5669, PS 5662)



#### ASTTF-566x-FC transport trolley

- For the safe transportation of sterile supplies and for loading/unloading large steam sterilisers
- For stackable loads such as containers and baskets
- For use of loading carriage
- Safety device for docking to large steam sterilisers
- Optional: Automatic height-adjustment feature (ASTTA-566xx-FC)
- Stainless steel



#### ASTTF-566x-LC transport trolley

- For the safe transportation of loading carriages within CSSD and for loading/unloading sterilisers and conveyors
- Safety docking device
- Transport lock for loading trolleys
- Optional: Automatic height-adjustment feature (ASTTA-566xx-LC)
- Stainless steel



#### ASLCR-566x loading carriage

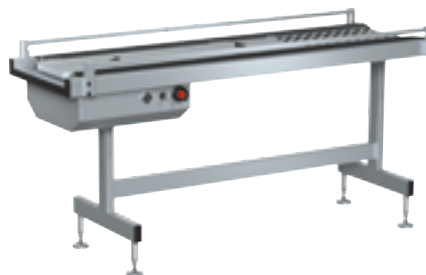
- For loading/unloading sterilisers and for transporting sterile supplies
- Height-adjustable and removable intermediate shelves
- Stainless steel

### Automatic loading/unloading (PS 5666, PS 5669, PS 5662)



#### ASTTF-566x-RG transport trolley

- For the safe transportation of sterile supplies and loading/unloading transport conveyors
- For stackable loads such as containers and baskets
- For use of loading carriage
- Safety device for docking to loading/unloading system of large steam sterilisers
- Optional: Automatic height-adjustment feature (ASTTA-566xx-RG)
- Stainless steel



#### ASCOS-566x-LDC-LS infeed conveyor

- Infeed conveyor for transfer of sterile supplies into sterilisation chamber
- Stainless steel



#### ASCOS-566x-ULC-LS outfeed conveyor

- Outfeed conveyor for automatic removal of sterile supplies from sterilisation chamber
- Stainless steel



# Accessories

## Transportation systems for loading versatility

### Automatic loading/unloading (PS 5666, PS 5669, PS 5662)



#### ASCOS-566x-LDC-LC infeed conveyor

- Infeed conveyor for transfer of load carriage into sterilisation chamber
- Stainless steel



#### ASCOS-566x-ULC-LC outfeed conveyor

- Outfeed conveyor for automatic removal of load carriage from sterilisation chamber
- Stainless steel

### Manual and automatic loading/unloading (PS 5966, PS 5969, PS 5962)



#### ASTTF-596x-LC transport trolley

- For the safe transportation of loading carriages within CSSD and for loading/unloading sterilisers and conveyors
- Safety docking device
- Transport lock for loading carriages
- Stainless steel



#### ASLCR-596x infeed conveyor

- For loading/unloading sterilisers and for transporting sterile supplies
- Height-adjustable and removable intermediate shelves
- Stainless steel



#### ASCOS-566-LDC-LC infeed conveyor

- Infeed conveyor for transfer of load carriages into sterilisation chamber
- Stainless steel

#### ASCOS-596x-ULC-LC outfeed conveyor

- Outfeed conveyor for automatic removal of load carriages from sterilisation chamber
- Stainless steel





Miele & Cie. KG, Gütersloh  
[www.miele-professional.com](http://www.miele-professional.com)

**Forever Better**

Since 1899, Miele – a family-run company – has subscribed to a clear corporate philosophy condensed into the two words 'Forever better'. This overarching claim is the foundation of Miele's proverbial quality and sustainability and the power of innovation of a brand 'Made in Germany'. A brand promise which gives commercial users the certainty of having chosen the right product.

**Award-winning**

Uncompromising product reliability and service dependability is the reason why customers have repeatedly voted Miele the best and most trustworthy brand. Coveted awards such as the MX Award, the iF and reddot Design Awards and the German Sustainability Prize confirm the distinguished position Miele enjoys with respect to design, quality management and the sparing use of resources.

**Proficient**

Miele Professional has been developing and manufacturing a broad range of high-quality laundry machines, dishwashers, washer-disinfectors and sterilisers for decades. Carefully selected accessories, comprehensive advisory services and a Miele factory service operation which guarantees a fast response and ensures that machines perform to perfection and offer the ultimate in performance and efficiency.